

Connect to the Cambridge network – Mac users

These instructions are intended for Macs running OS X 10.8 Mountain Lion to 10.13 High Sierra, excluding OS X Yosemite (10.10). Other versions may not be supported.

You can connect to the University network from home or another location so that you can access files and use common software, for example Word, Excel, PowerPoint and CHRIS.

You can also connect to your office computer so you can use any special software you've installed. You must leave your desktop on to be able to access it remotely.

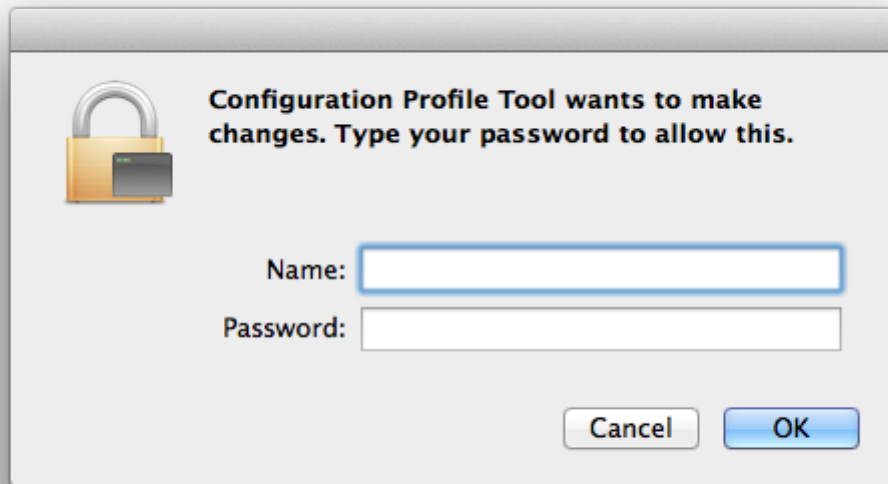
All traffic on the university network is recorded and logged for security purposes.

Set up your connection

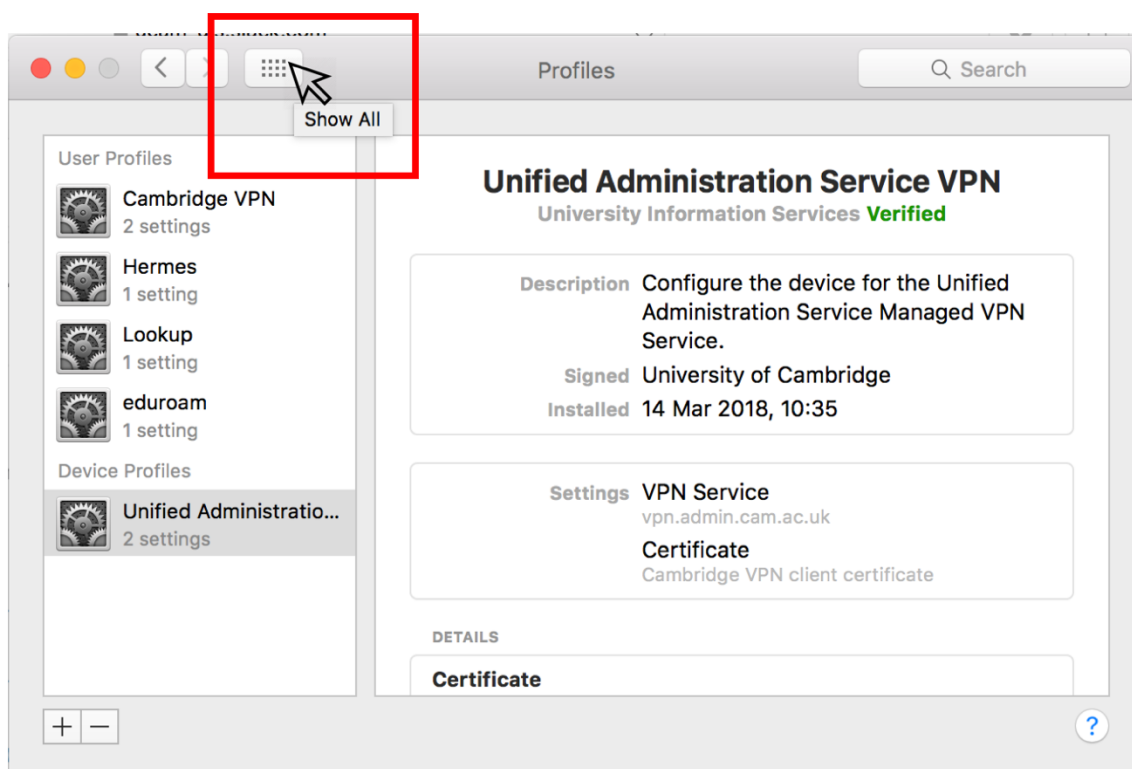
1. [Copy a network token](#) onto your clipboard.
2. [Download the set-up file](#). A panel labelled Install 'Unified Administration Service VPN' will appear.



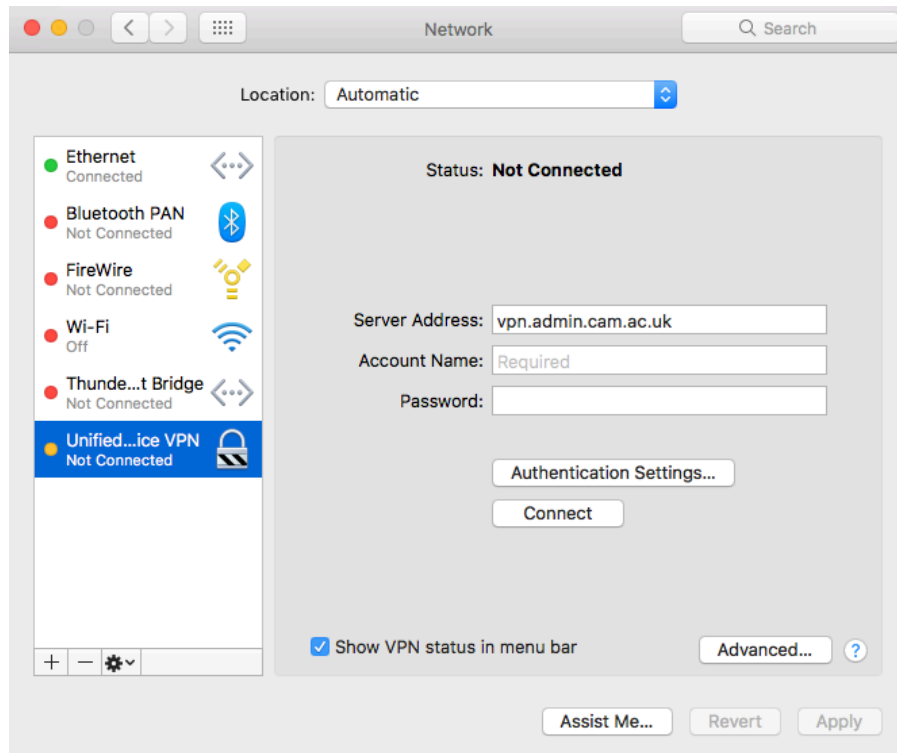
3. Click **Install**.
4. Type in the username and password of an admin account on your Mac.



5. Click **Show All** in the toolbar.



6. The **System Preferences** panel will appear. Click on **Network**.
7. In the **Network** panel click on **Unified Administration Service VPN** (this might be shortened as in the screenshot).



8. A Sign in box will appear. Fill in the fields as follows:

Username: enter your **CRSid@cam.ac.uk**, eg **abc123@cam.ac.uk**

Password: paste in the network access token from your clipboard

9. Tick **Show VPN status** in menu bar then click **Apply**.
10. Start the connection by clicking **Connect**.

Connect to the network if it's already installed

You can connect by clicking the VPN menu bar item.

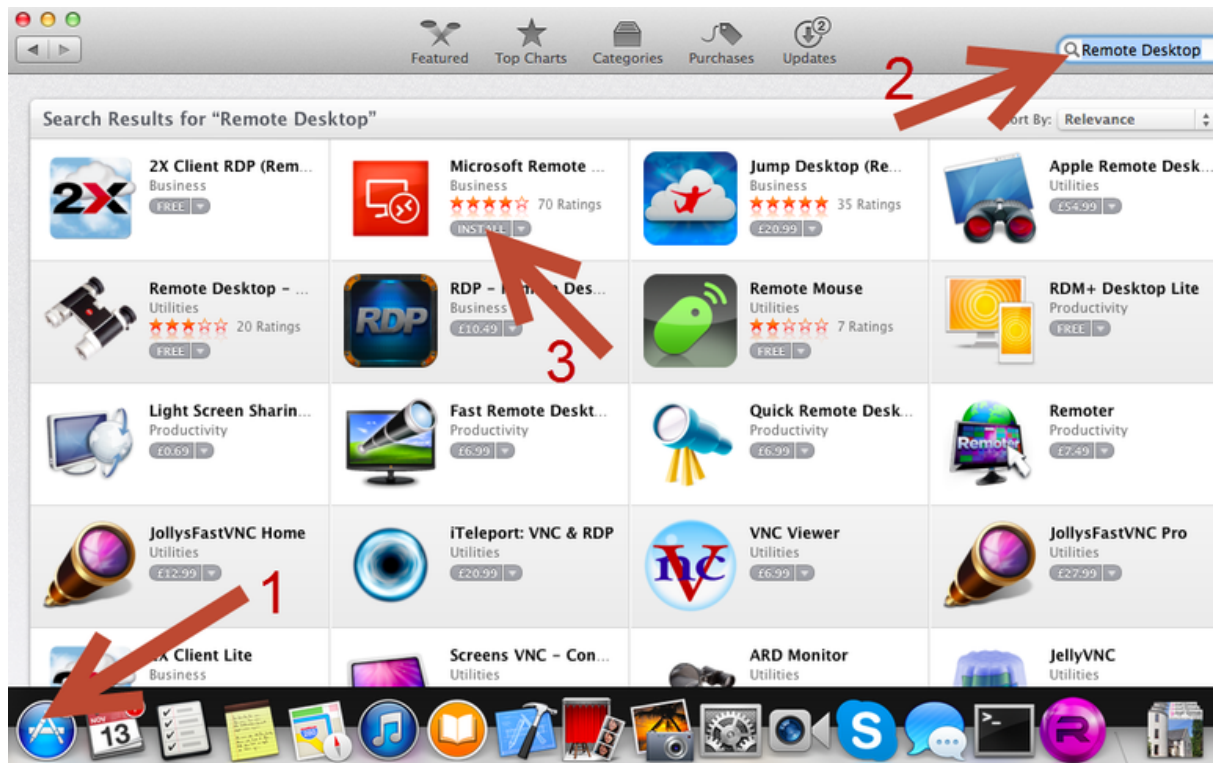


Click **Connect Unified Administration Service VPN**.

Install Microsoft Remote Desktop

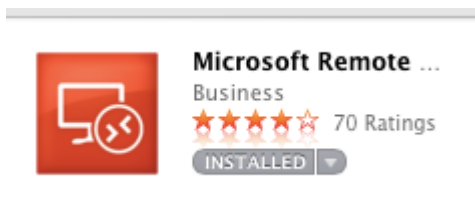
These instructions are written for OSX 10.9 Mavericks. Other versions of OSX may differ slightly


1. Open the App Store and type **Remote Desktop** in the search field. Click **Install** for the free Microsoft Remote Desktop app. Enter your Apple ID and password if required.



2. Open the App Store and type **Remote Desktop** in the search field. Click **Install** for the free Microsoft Remote Desktop app.

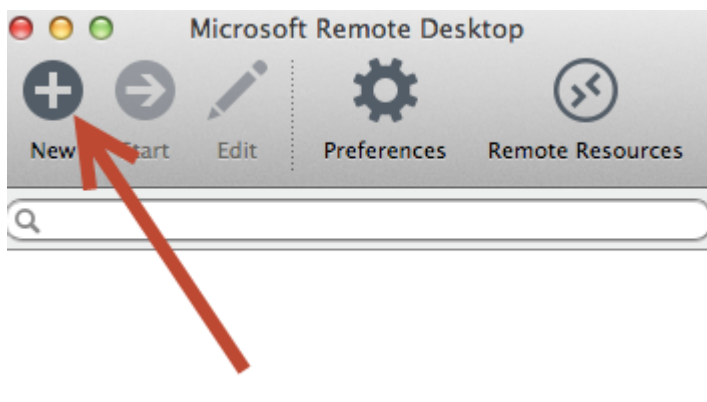
Once the Microsoft Remote Desktop app is installed you will see a confirmation in the App Store.



3. Open the Launchpad  from the dock.
4. Find the Microsoft Remote Desktop app and open it.



5. Click the **New** icon.



6. A panel labelled **Edit Remote Desktops** will appear. Fill in the fields as follows:

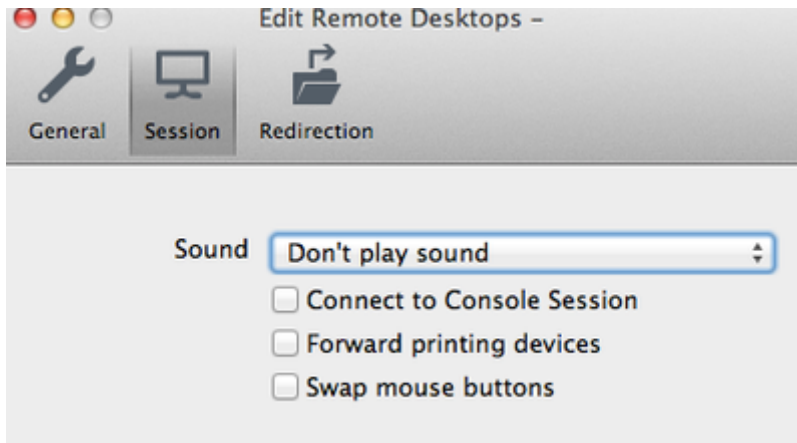
PC name: **harbinger.internal.admin.cam.ac.uk** or
nazara.internal.admin.cam.ac.uk

Username: **internal** followed by your **CRSid** eg **internal\abc123**

Password: use the password you use for your office computer (your ACN password)

Set the **Colors** to 24-bit or 32-bit color. You can tick the box next to **Full screen** if you want.

7. Click on the **Session** tab and select **Don't play sound**.



8. Click the red **Close** button.

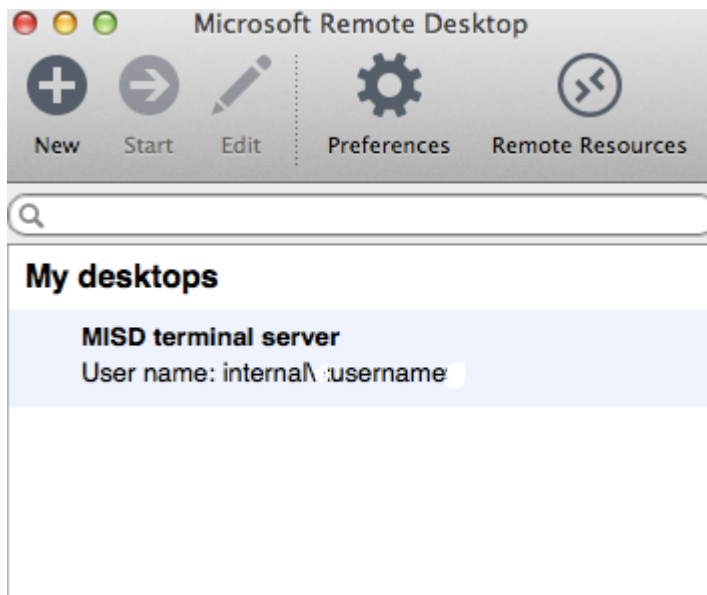
Access common software and shared files

When you've connected to the network you can access common software and shared files.

1. Launch Microsoft Remote Desktop Application



2. Double-click on your connection name. You should get a connection to our network.



3. Login with your **ACN password** (the one you use for your office desktop)

Mac users: access your computer's software

You may have specialist software on your work PC, such as AutoDesk, that isn't available on the standard Terminal Server that you remotely access. The service desk can help solve this by setting up remote access directly to your work PC.

You can get help to access your own office computer remotely if you have:

- left your office computer on
- set up a connection to the network on your home computer

To complete the process, contact the service desk on telephone number: 01223 (7)66291.

Provide your workstation number (starts 'OS' or 'LT' followed by 6 digits) if you have it.

Removing the VPN

1. Open **System Preferences** and choose **Profiles**.
2. Click the **Unified Administration Service** profile.
3. Authenticate with an admin username and password when prompted.